

THE BONE GAME

The Bone Game is a fast-paced card-matching game intended to help players learn the names of the 23 major bones in the human body. You'll have so much fun shouting and taking cards from the other players, you won't even notice your growing knowledge of human skeletal anatomy.

The Bone Game is a quick, fun, educational game, ideal for families with school-age children and for teachers with students learning about the human skeleton.



Ages 7+



2-4 players



5-10 min.



This is the Teachers PnP Edition of "The Bone Game"

This print-and-play version of "*The Bone Game*" is for classroom teachers, homeschooling families, and anyone else who is doing school at home. We hope "*The Bone Game*" inspires your kids to make their own educational games!

CONTENTS & PRINTING INSTRUCTIONS

This PDF contains the following items. Please note the printing instructions for each.

Page 2: **The rules of "*The Bone Game*"** – print if full-page-sized rules are desired.

Page 3-8: **Card Faces** – print these six (6) pages (with 50 cards total) single-sided.

Page 9: **Card Backs** – if you wish to add backs to the cards, you can:

1. Print six (6) copies single-sided, cut away the borders, and then use a gluestick to affix the backs to the cards.
2. If using a thicker paper, run the cards through the printer again being sure to orient the papers such that the backs are printed on the reverse of the cards.

IMPORTANT: some printers may add a slight offset to a page when printing. In this case you may find the backs and faces don't line up exactly. Option #1 above will avoid this issue, but does require additional assembly. In either case, cut out the cards by following the red guidelines on the card faces, for best results.

Page 10-13: **Human Skeleton Activities** – these pages can be printed single or double-sided, or as a booklet.

Thanks for Playing!

© 2018 Silverpath Publishing Inc.

Visit <https://PLAYGAMES2LEARN.COM> for more games, activities and printables!

RULES FOR THE BONE GAME



Ages 7+



2-4 players



5-10 min.

Set-up

- Start with 8 cards each. Place them face up in front of you.
- Place the leftover cards face down in the middle to be the draw deck.

On Your Turn

- Draw a card from the deck. You can only have 10 face up cards. If you already have 10 cards face up, DO NOT draw a card.
- You may also perform a single “take” action if you see another player with a card that can pair with one of yours. **Shout** the name of the bone and then, **take it!**
- To complete your turn, place any matching pairs you have face down in front of you. You can make a pair if you have a “Picture Only Card” and the correct “Bone Name Card”:
 - Picture Only Card: has just one picture
 - Bone Name Card: has words and pictures
- Your pairs DO NOT count towards your 10 cards.



Winning

- Play until the deck is empty.
- The winner is the player with the most pairs.

* **Alternative Game Play:** Use the cards to play Memory!

Thank you for playing THE BONE GAME!

This game was designed by Jasmine Atkins when she was seven years old and learning about the human skeleton. Jasmine has always looked for fun and interesting ways to learn. Making games has been a big part of that. Now, we are proud to share this fun way to learn the 23 major bones in the human skeleton with you.

Game designed by Jasmine Atkins
© 2018 Silverpath Publishing Inc.
Visit <https://PLAYGAMES2LEARN.COM> for
more games, activities and printables!

RULES

2–4 Players

Set-up

- Start with 8 cards each. Place them face up in front of you.
- Place the leftover cards face down in the middle to be the draw deck.

On Your Turn

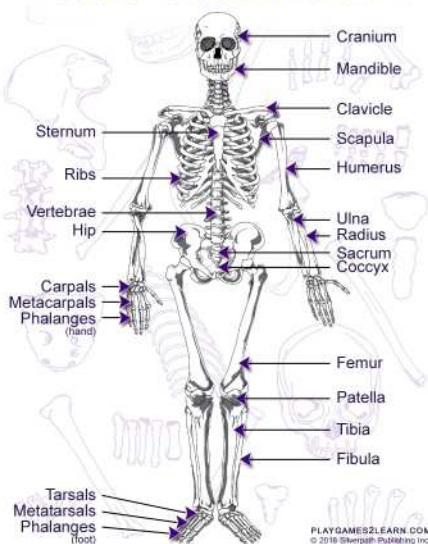
- Draw a card from the deck. You can only have 10 face up cards. If you already have 10 cards face up, **DO NOT** draw a card.
- You may also perform a single "take" action if you see another player with a card that can pair with one of yours. **Shout** the name of the bone and then, **take it!**
- To complete your turn, place any matching pairs you have face down in front of you. You can make a pair if you have a "Picture Only Card" and the correct "Bone Name Card":
 - Picture Only Card: has just one picture
 - Bone Name Card: has words and pictures
- Your pairs **DO NOT** count towards your 10 cards.

Winning

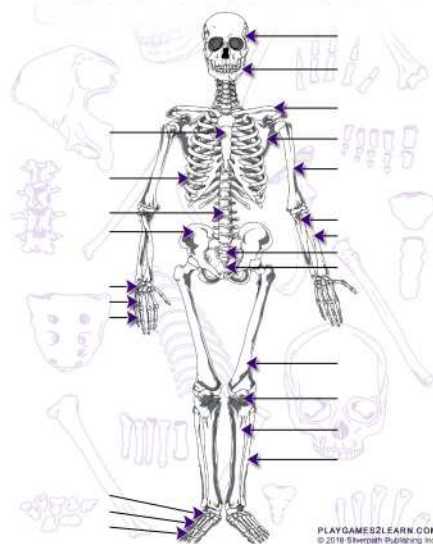
- Play until the deck is empty.
- The winner is the player with the most pairs.

Alternative Game Play: Use the cards to play Memory!

REFERENCE



REFERENCE



THANK YOU

Thank you for playing THE BONE GAME!

This game was designed by Jasmine Atkins when she was seven years old and learning about the human skeleton. Jasmine has always looked for fun and interesting ways to learn. Making games has been a big part of that. Now, we are proud to share this fun way to learn the 23 major bones in the human skeleton with you.

Visit PLAYGAMES2LEARN.COM to download full-page reference sheets and other related printables! You will also find more games and interesting teaching materials for other topic areas.



THE BONE GAME is © 2018 Silverpath Publishing Inc.
All rights reserved. Visit PLAYGAMES2LEARN.COM
Skeleton adapted from image by Ricarda Molck via Pixabay.com.



PLAYGAMES2LEARN.COM



PLAYGAMES2LEARN.COM



PLAYGAMES2LEARN.COM



PLAYGAMES2LEARN.COM



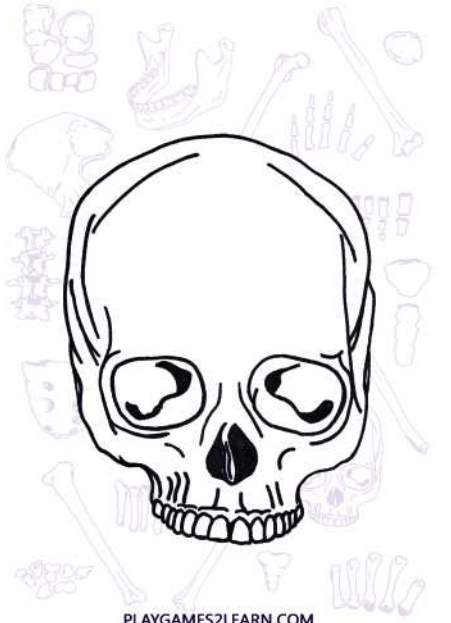
PLAYGAMES2LEARN.COM



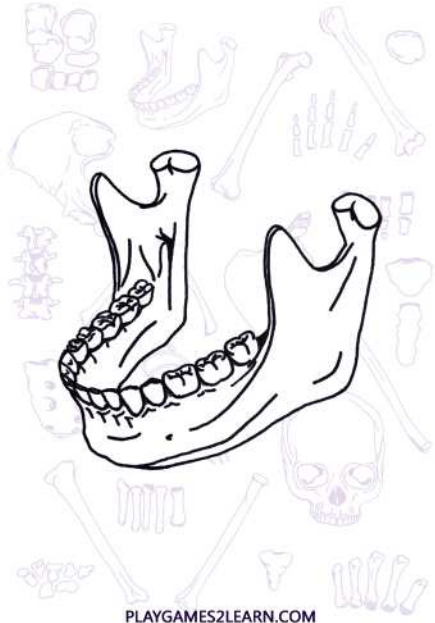
PLAYGAMES2LEARN.COM



PLAYGAMES2LEARN.COM



PLAYGAMES2LEARN.COM



PLAYGAMES2LEARN.COM



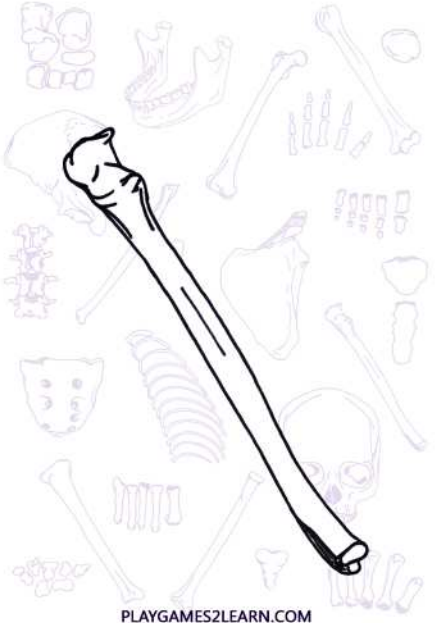
PLAYGAMES2LEARN.COM



PLAYGAMES2LEARN.COM



PLAYGAMES2LEARN.COM



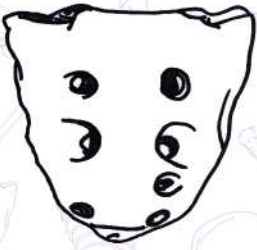
PLAYGAMES2LEARN.COM



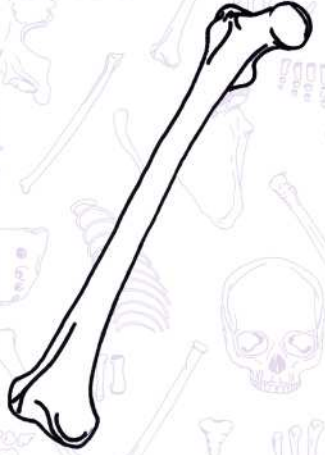
PLAYGAMES2LEARN.COM



PLAYGAMES2LEARN.COM



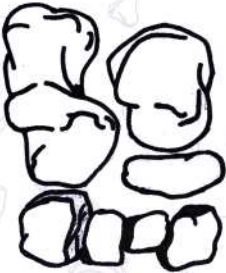
PLAYGAMES2LEARN.COM



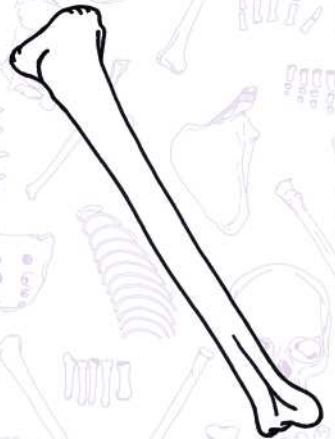
PLAYGAMES2LEARN.COM



PLAYGAMES2LEARN.COM



PLAYGAMES2LEARN.COM



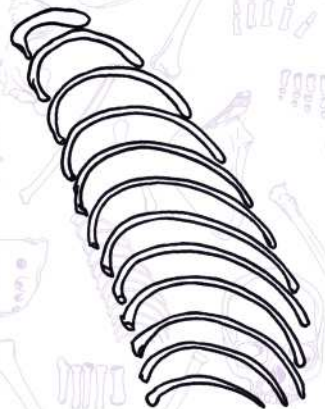
PLAYGAMES2LEARN.COM



PLAYGAMES2LEARN.COM



PLAYGAMES2LEARN.COM



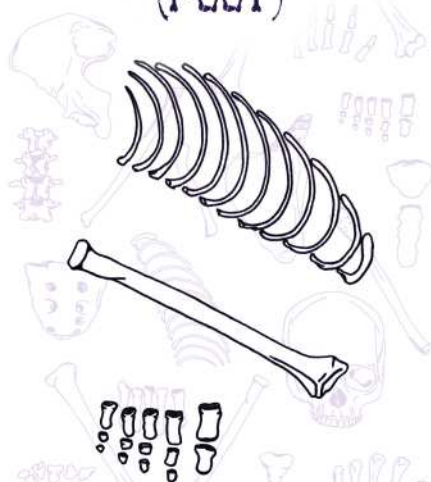
PLAYGAMES2LEARN.COM

PHALANXES (HAND)



PLAYGAMES2LEARN.COM

PHALANXES (FOOT)



PLAYGAMES2LEARN.COM

CRANIUM



PLAYGAMES2LEARN.COM

MANDIBLE



PLAYGAMES2LEARN.COM

VERTEBRAE



PLAYGAMES2LEARN.COM

PATELLA



PLAYGAMES2LEARN.COM

CARPALS



PLAYGAMES2LEARN.COM

ULNA



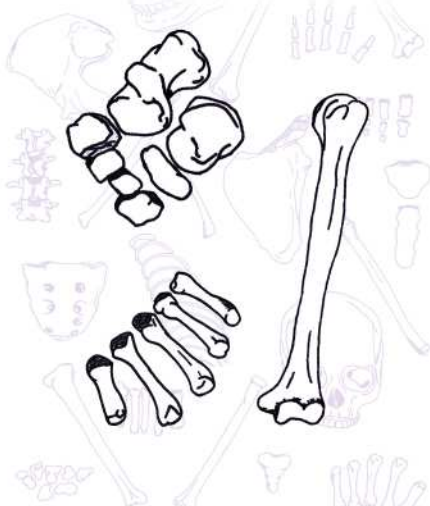
PLAYGAMES2LEARN.COM

METATARSALS



PLAYGAMES2LEARN.COM

METACARPALS



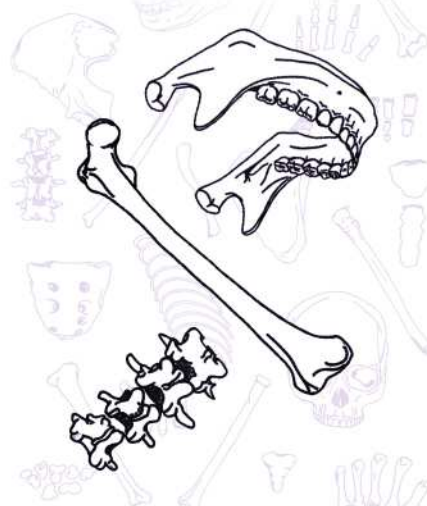
PLAYGAMES2LEARN.COM

SACRUM



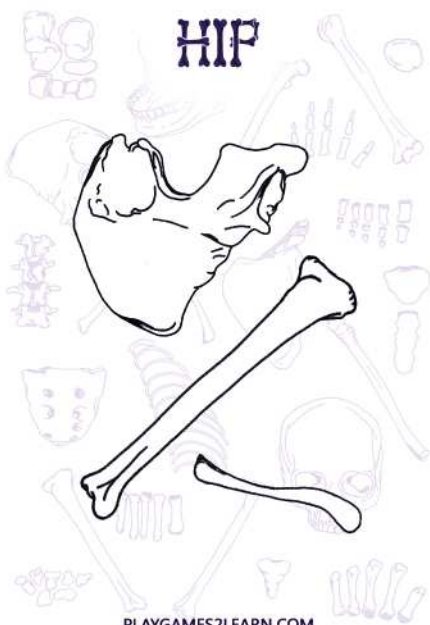
PLAYGAMES2LEARN.COM

FEMUR



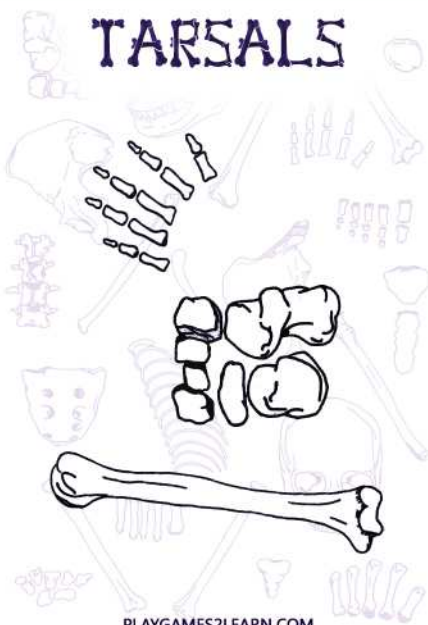
PLAYGAMES2LEARN.COM

HIP



PLAYGAMES2LEARN.COM

TARSALS



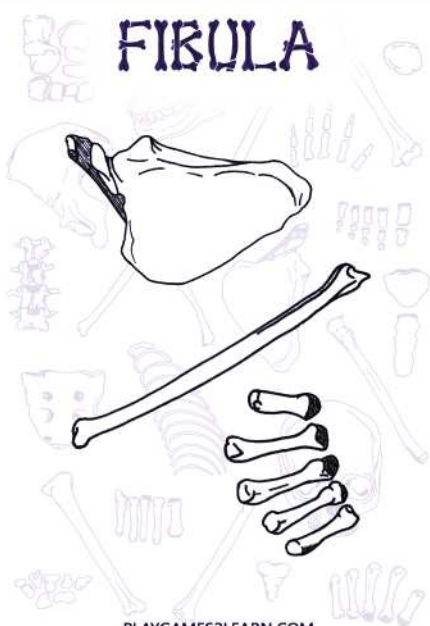
PLAYGAMES2LEARN.COM

TIBIA



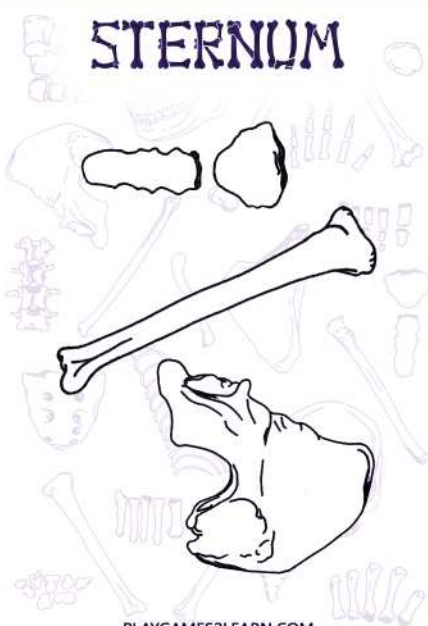
PLAYGAMES2LEARN.COM

FIBULA



PLAYGAMES2LEARN.COM

STERNUM



PLAYGAMES2LEARN.COM

RIBS



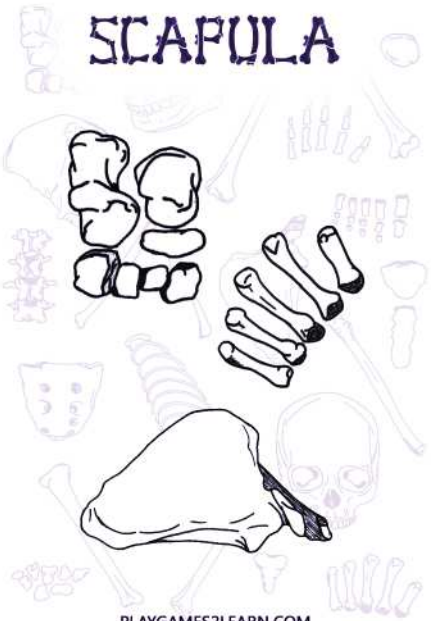
PLAYGAMES2LEARN.COM

RADIUS



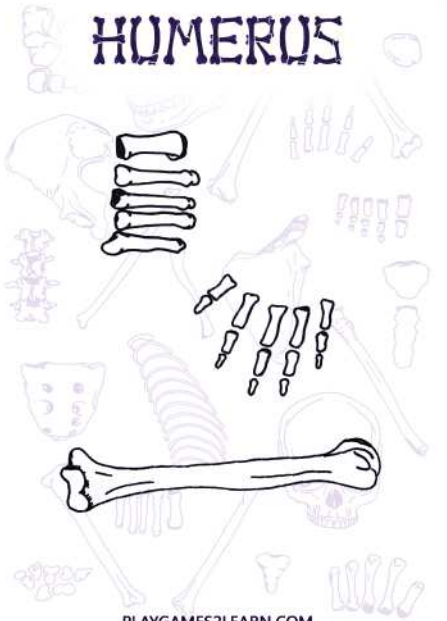
PLAYGAMES2LEARN.COM

SCAPULA



PLAYGAMES2LEARN.COM

HUMERUS



PLAYGAMES2LEARN.COM

COCCYX



PLAYGAMES2LEARN.COM

CLAVICLE



PLAYGAMES2LEARN.COM

THE
BONE GAME



PLAYGAMES2LEARN.COM

THE
BONE GAME



PLAYGAMES2LEARN.COM

THE
BONE GAME



PLAYGAMES2LEARN.COM

THE
BONE GAME



PLAYGAMES2LEARN.COM

THE
BONE GAME



PLAYGAMES2LEARN.COM

THE
BONE GAME



PLAYGAMES2LEARN.COM

THE
BONE GAME



PLAYGAMES2LEARN.COM

THE
BONE GAME



PLAYGAMES2LEARN.COM

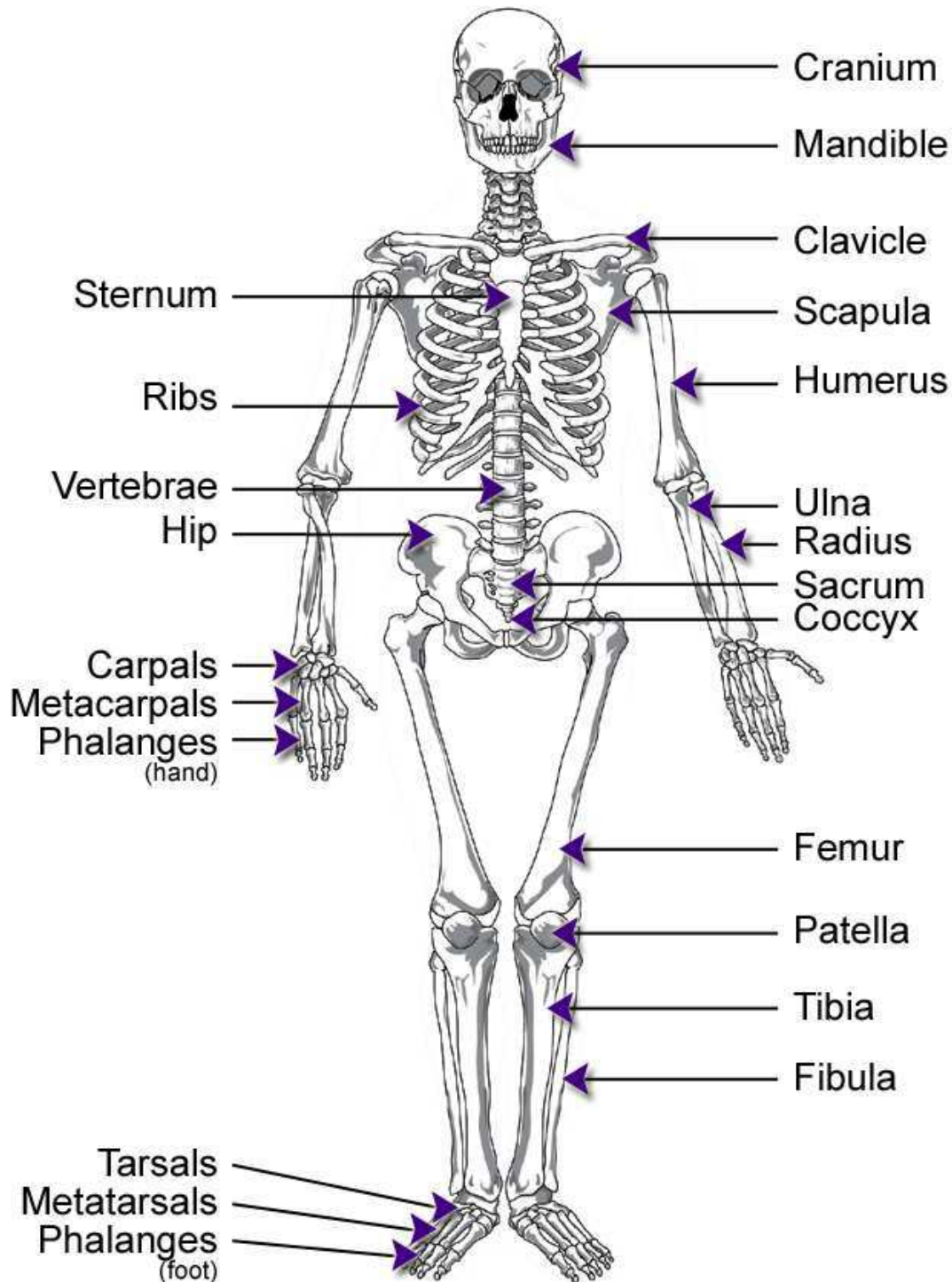
THE
BONE GAME



PLAYGAMES2LEARN.COM

REFERENCE

The 23 major bones of the human skeleton

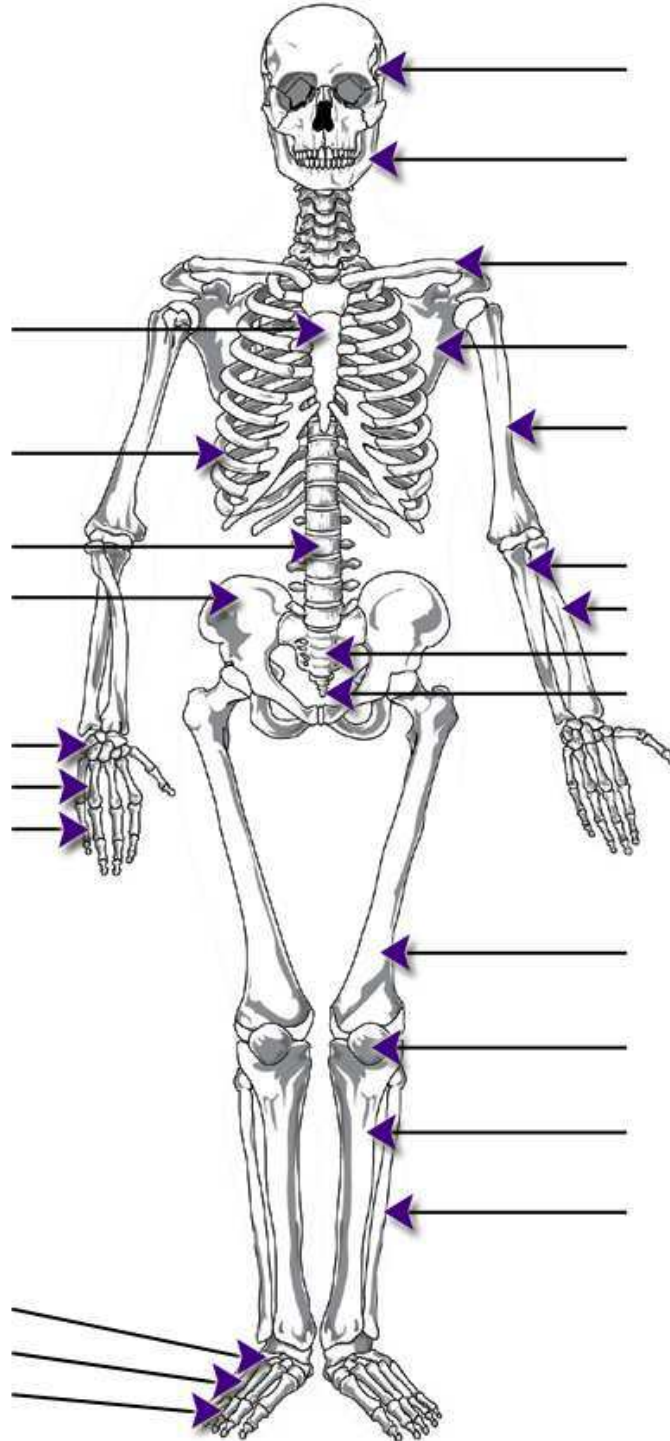


Name: _____

Date: _____

EXERCISE

Can you label the 23 major bones of the human skeleton?

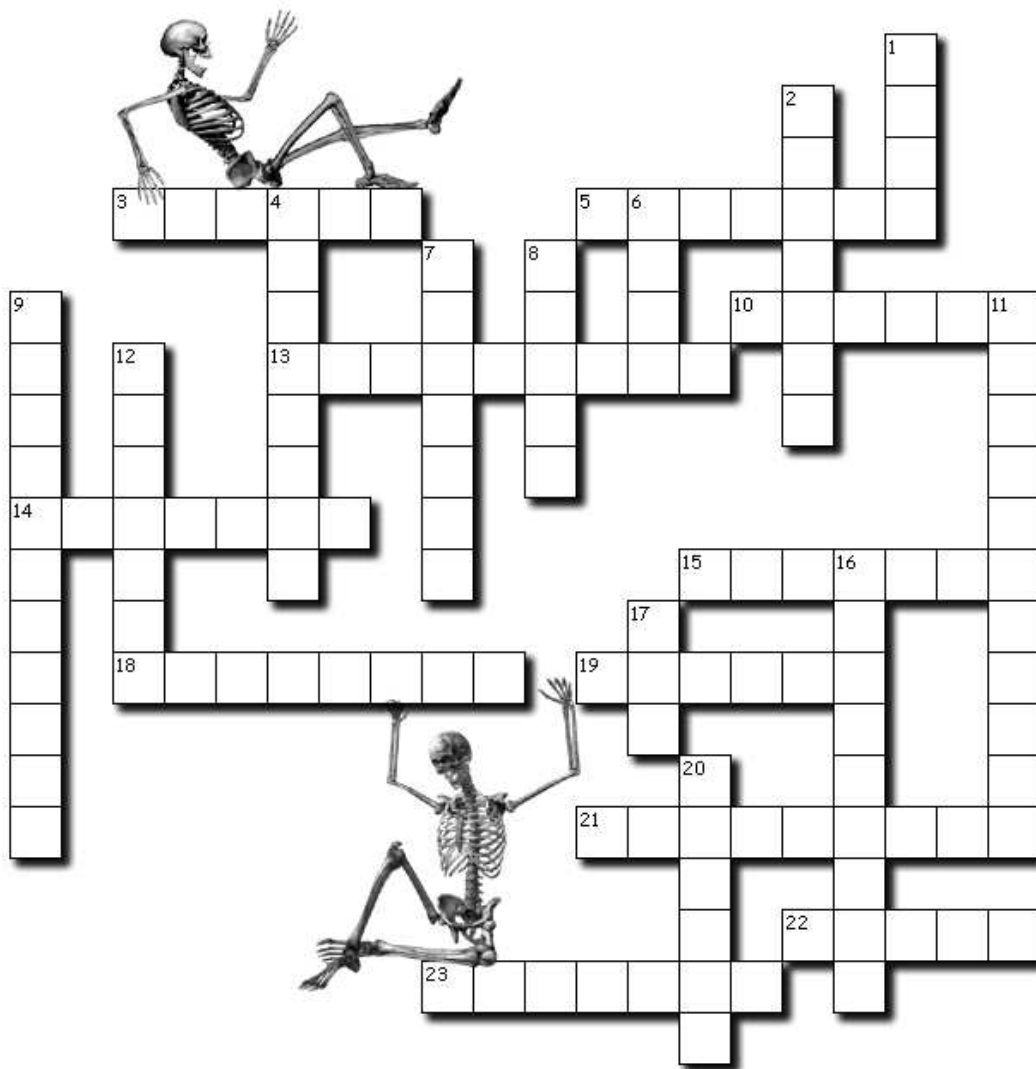


Name: _____

Date: _____

CROSSWORD PUZZLE

Can you solve the clues for the 23 major bones of the human skeleton?



Across

3. Your tail bone
5. Its name sounds funny
10. The triangular bone that joins your hips
13. Connects your top to your bottom
14. The bones of your wrist
15. Your shoulder blade
18. Helps you chew
19. The thin bone parallel to your shin bone
21. Your fingers
22. Your thigh bone
23. Protects your brain

Down

1. Encloses your lungs
2. Your ankle and heel bones
4. This bone is part of your collar
6. The arm bone lined up with your little finger
7. Your knee cap
8. Your shin bone
9. Connects your fingers to your wrist
11. Connects your toes to your ankle
12. Joins the front of your ribs together
16. Your toes
17. If you're mad, you might put your hand on it
20. The arm bone lined up with your thumb

Name: _____

Date: _____

WORDSEARCH PUZZLE

Can you find the 23 major bones of the human skeleton in the letters below?

R	S	R	Y	G	E	S	C	E	H	E	Y	H	K	B	P	S	M	C	A
A	O	L	Q	D	A	P	A	L	M	M	A	N	D	I	B	L	E	R	L
D	S	F	A	C	N	R	F	O	A	N	N	F	G	Z	T	A	I	A	U
I	X	U	R	P	B	H	K	T	D	V	S	V	S	S	L	S	A	N	P
U	D	U	R	E	R	U	I	P	R	N	I	N	D	I	R	R	Z	I	A
S	M	G	T	E	A	A	H	P	O	K	S	C	L	A	A	A	B	U	C
O	T	R	W	N	M	A	C	S	B	W	S	P	L	H	B	T	B	M	S
J	E	X	L	T	L	U	R	A	L	U	B	I	F	E	R	A	S	B	O
V	N	U	S	A	R	F	H	R	T	I	W	T	R	V	I	T	V	S	H
K	H	E	N	L	N	N	C	A	Z	E	S	Z	G	S	M	E	Z	Q	V
V	C	G	X	O	I	T	C	U	J	O	M	K	Y	L	G	M	Y	S	G
Q	E	I	A	X	A	D	O	O	C	N	Y	N	I	V	I	S	F	A	I
S	M	U	N	R	E	T	S	D	C	R	I	B	S	W	R	X	J	N	Y
X	C	F	S	G	S	S	Q	E	A	C	U	U	U	X	M	R	E	U	H
J	I	A	Z	R	L	K	S	N	M	Z	Y	M	F	N	B	P	A	O	Y
N	L	L	R	A	E	I	Q	F	I	A	H	X	E	L	M	F	I	B	O
S	G	V	P	O	X	Q	U	X	R	B	M	F	V	F	S	C	B	P	F
G	R	R	M	X	L	S	Y	X	H	X	O	A	L	C	C	A	I	S	T
A	A	Z	Y	S	E	G	N	A	L	A	H	P	T	O	O	F	T	F	T
C	P	A	T	E	L	L	A	Y	Y	P	J	W	C	W	S	P	Q	Z	L

CARPALS
CLAVICLE
COCCYX
CRANIUM
FEMUR
FIBULA

FOOTPHALANGES
HANDPHALANGES
HIP
HUMERUS
MANDIBLE
METACARPALS

METATARSALS
PATELLA
RADIUS
RIBS
SACRUM
SCAPULA

STERNUM
TARSALS
TIBIA
ULNA
VERTEBRAE