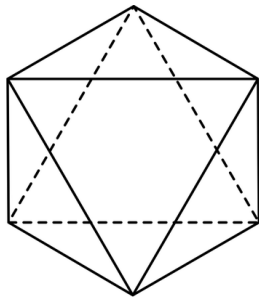


**! Print Single-Sided !**

## 8-sided Dice – Octahedron

### Description:

An 8-sided die is a three-dimensional shape called an octahedron. An octahedron is a polyhedron with eight triangular faces. A regular octahedron, such as our 8-sided die, is one in which all eight faces are equilateral triangles. It is one of the five regular Platonic solids, which were named after Plato, a philosopher from Ancient Greece.

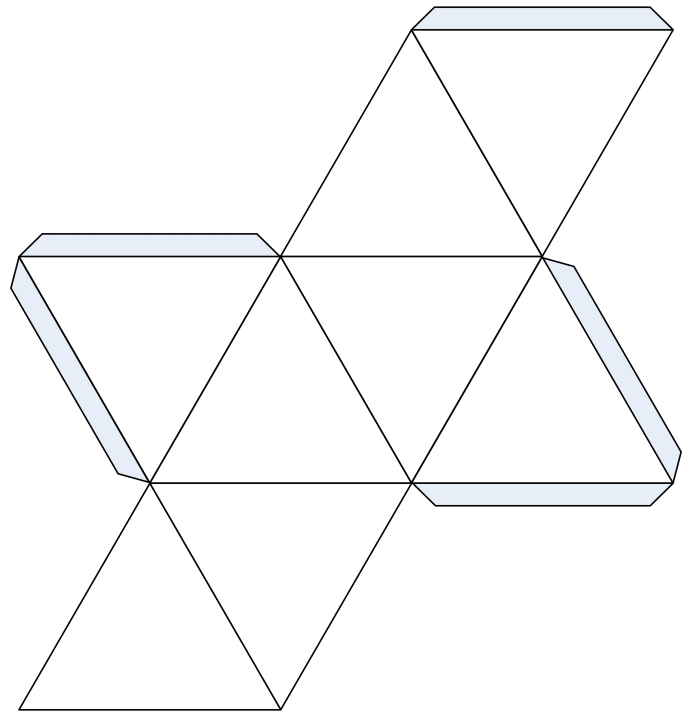


### Octahedron Quick Facts:

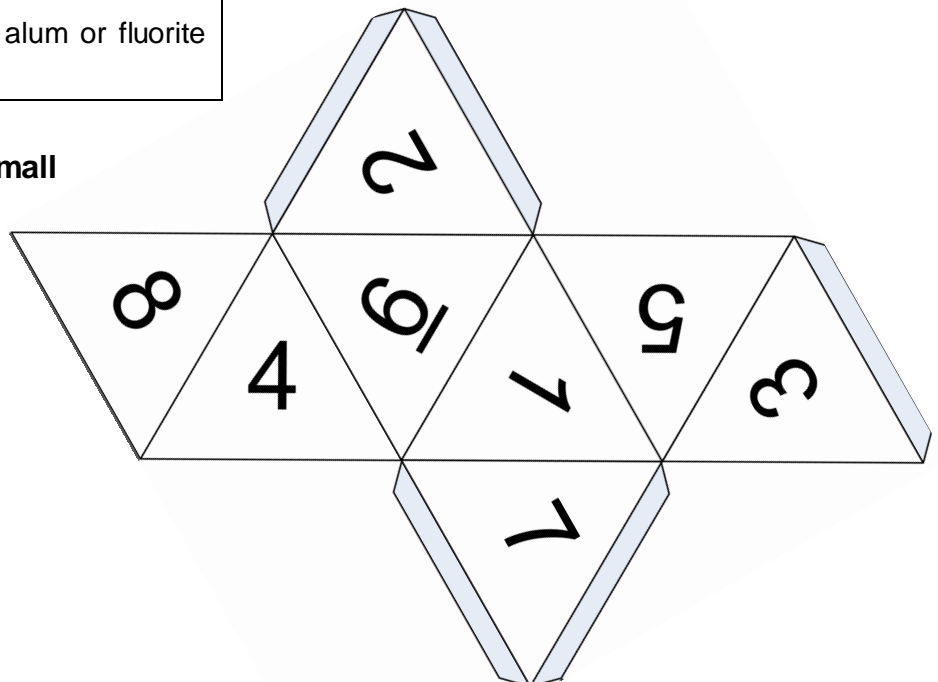
- Faces: 8
- Vertices: 6
- Edges: 12

! Natural crystals of diamond, alum or fluorite are commonly octahedral.

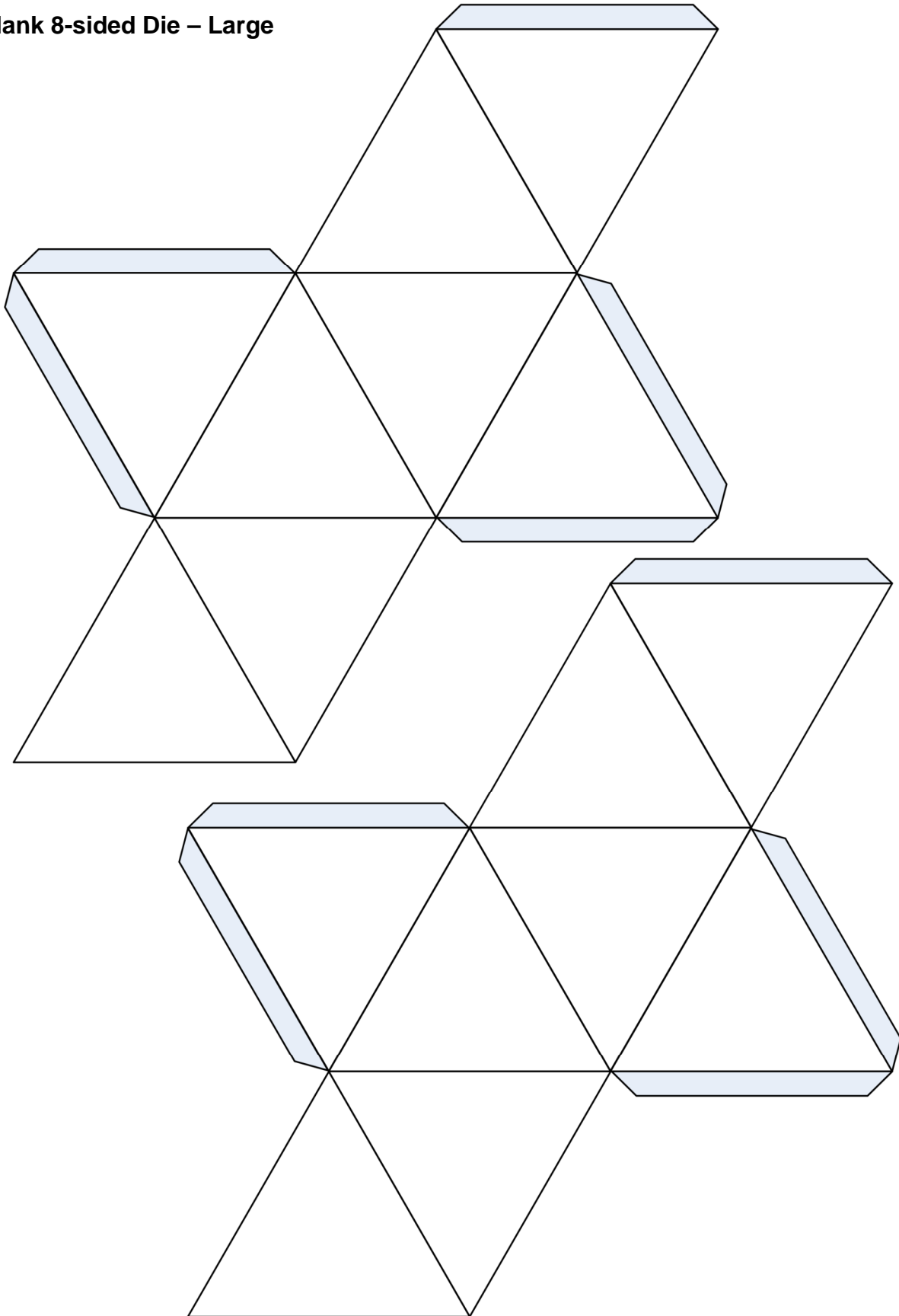
### Blank 8-sided Die – Small



### Numbered 8-sided Die – Small



**Blank 8-sided Die – Large**



**Numbered 8-sided Die – Large**

