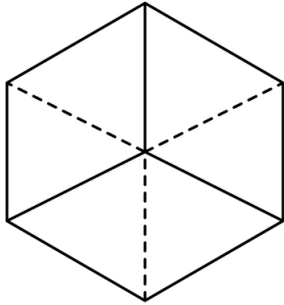


**! Print Single-Sided !**

## 6-sided Dice – Hexahedron

### Description:

A 6-sided die is a special case of the three-dimensional hexahedron. The cube is the only regular hexahedron and is composed of six square faces with three meeting at each vertex. It is one of the five regular Platonic solids, which were named after Plato, a philosopher from Ancient Greece. The cube is also the only convex polyhedron whose faces are all squares.

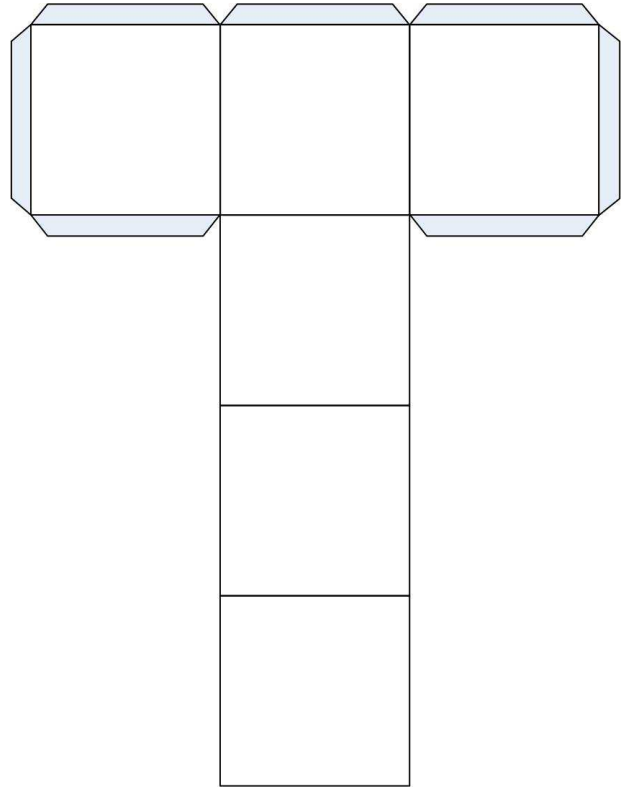


### Tetrahedron Quick Facts:

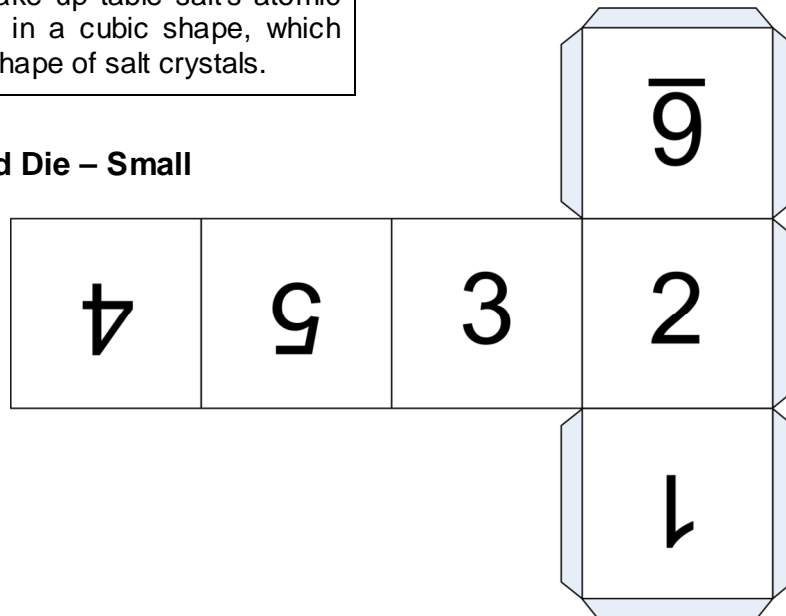
- Faces: 6
- Vertices: 8
- Edges: 12

! The atoms that make up table salt's atomic lattice are arranged in a cubic shape, which results in the cubic shape of salt crystals.

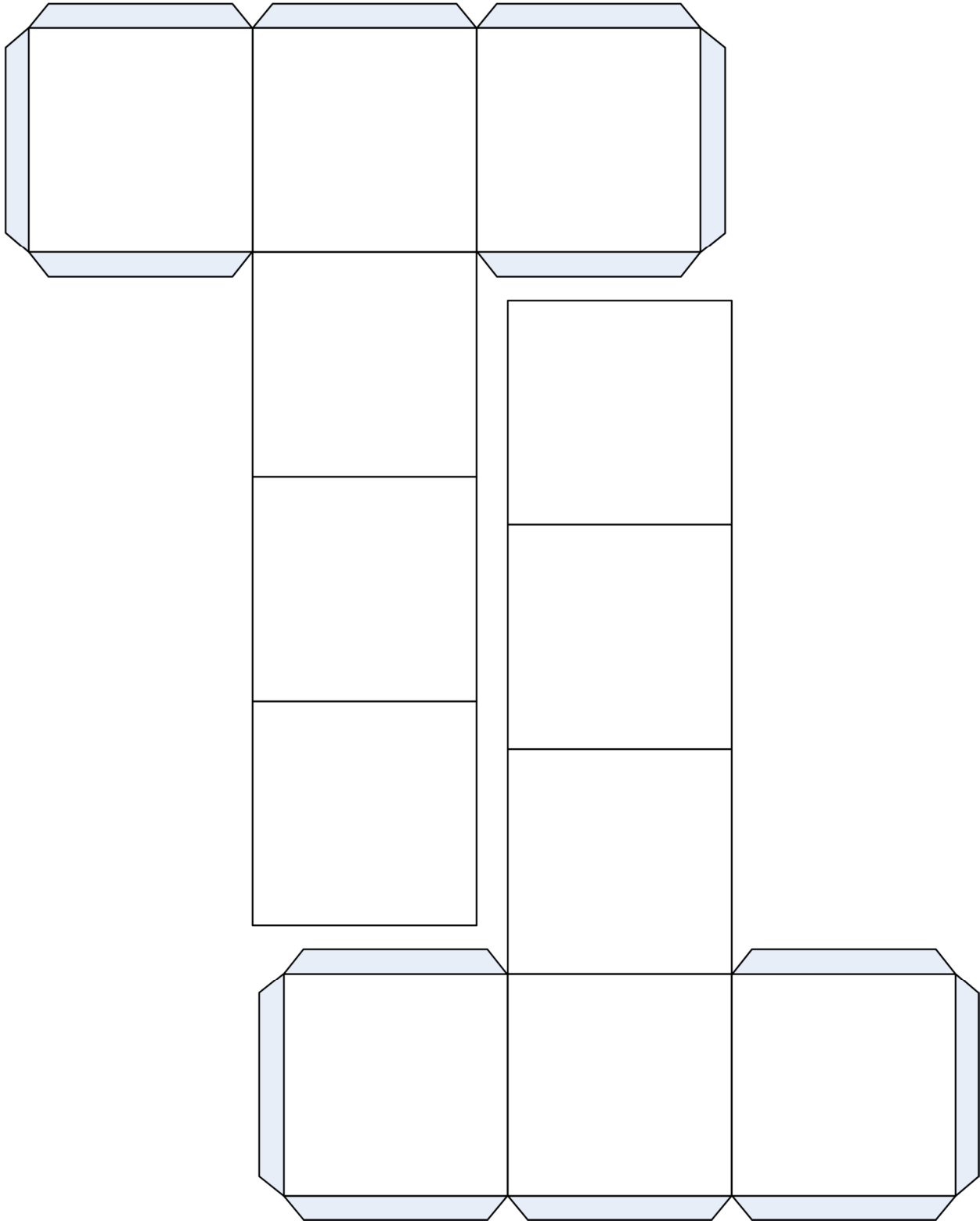
### Blank 6-sided Die – Small



### Numbered 6-sided Die – Small



**Blank 6-sided Die – Large**



**Numbered 6-sided Die – Large**

