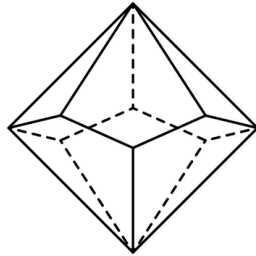


**! Print Single-Sided !**

## 10-sided Dice – Pentagonal Trapezohedron

### Description:

A 10-sided die is a ten-sided three-dimensional shape. A ten-sided shape can be called a decahedron, but there are 32,300 topologically distinct decahedra and none are regular so decahedron is an ambiguous term in geometry. The three-dimensional shape most often associated with the 10-sided die is called a pentagonal trapezohedron. It is **NOT** one of the regular Platonic solids.

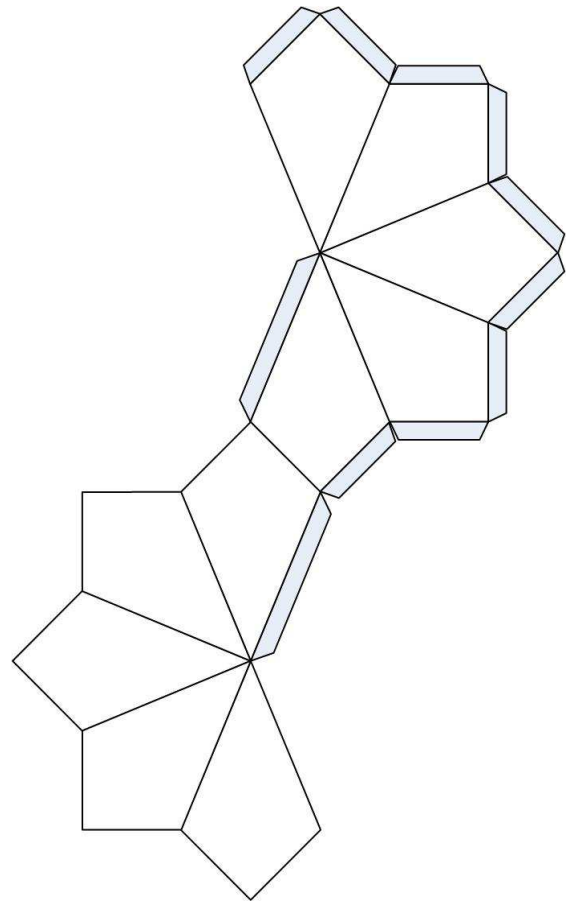


### Pentagonal Trapezohedron Quick Facts:

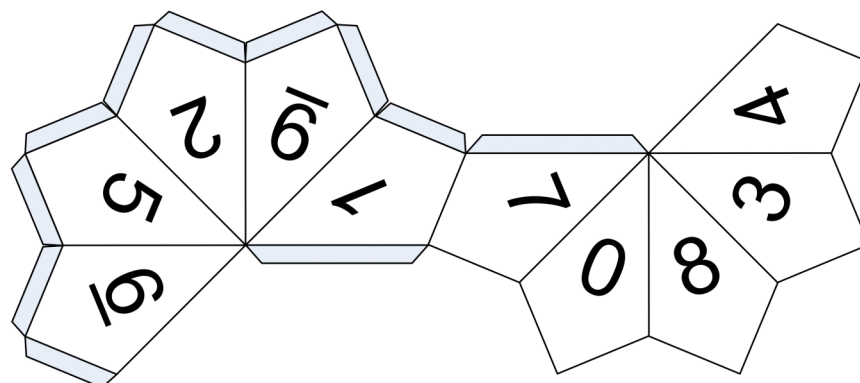
- Faces: 10
- Vertices: 12
- Edges: 20

! The pentagonal trapezohedron was patented for use as a gaming die in 1906. These dice are often used in pairs with games utilizing percentile-based outcomes.

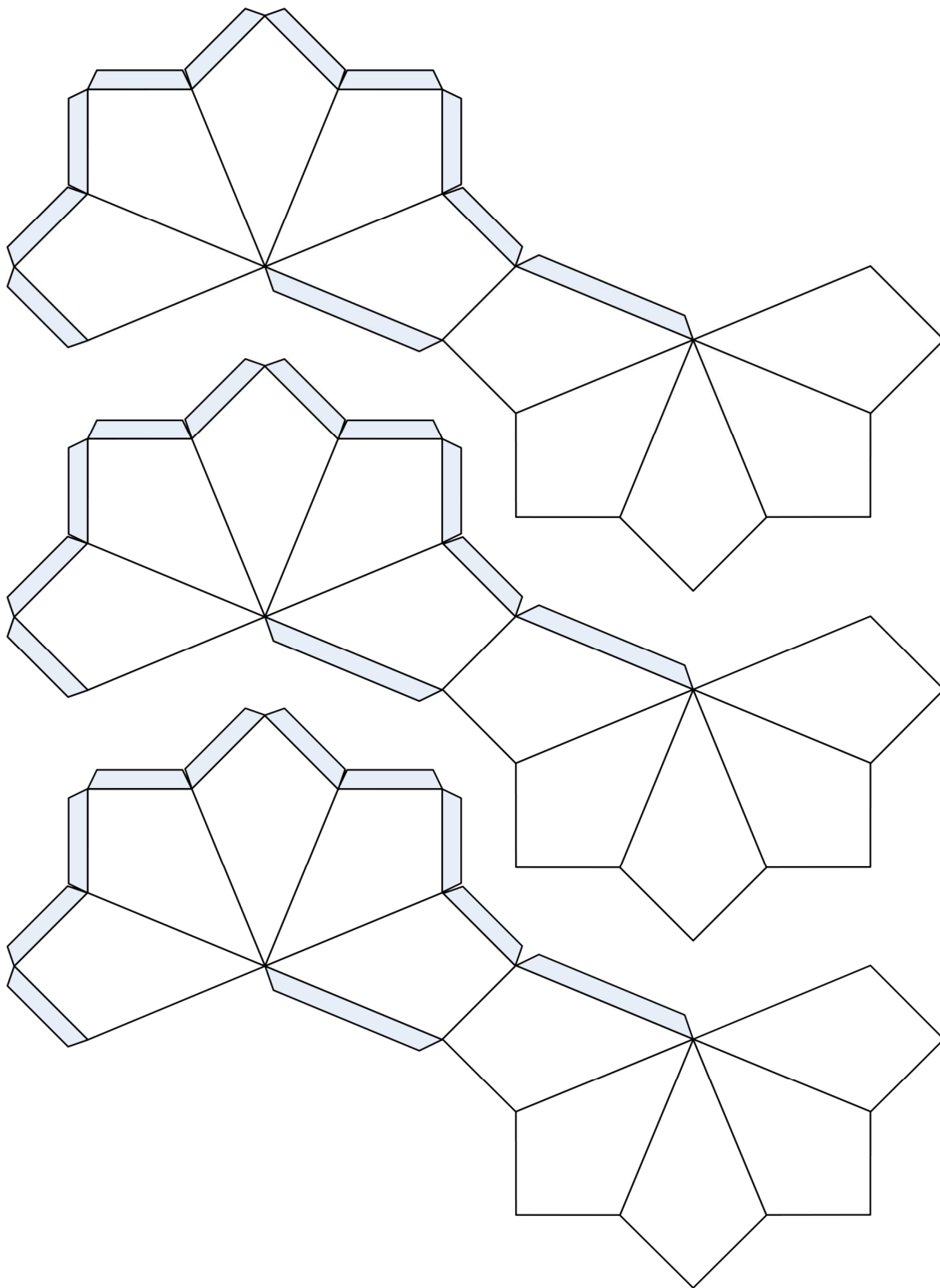
### Blank 10-sided Die – Small



### Numbered 10-sided Die – Small



**Blank 10-sided Die – Large**



# Numbered 10-sided Die – Large

